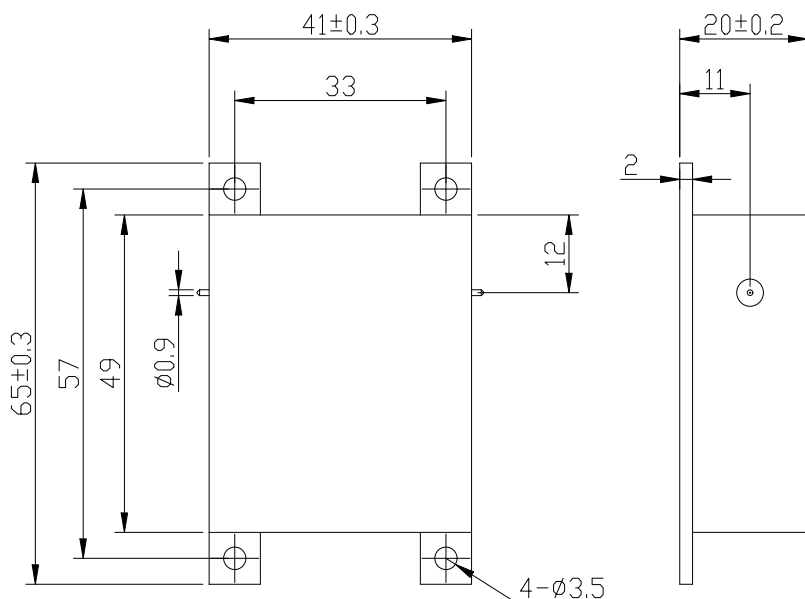
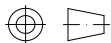




300 to 1000MHz Drop in Isolator

WG4149A Drop-In Type

Outline Drawing (mm):



Features:

- ◇ Good temperature stability
- ◇ Withstand high power
- ◇ RoHS compliant
- ◇ Weight : ≈ 360 g

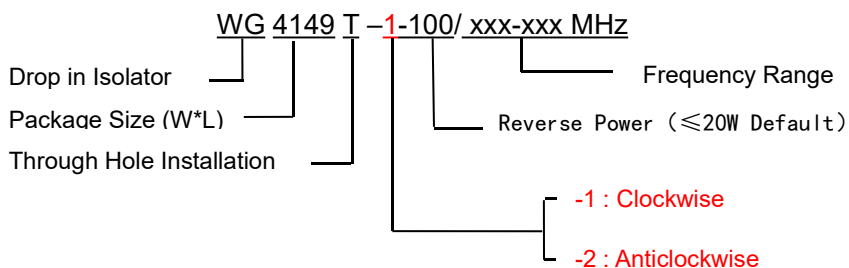
Material list:

- ◇ Shell: Steel
Coating: Bright Nickel
- ◇ Inner conductor: Brass
Coating: Silver

Application:

- ◇ Protect the power amplifier and
Installed at the end of RF power
amplifier
- ◇ Transceiver common antenna
- ◇ GSM1800/CDMA/TD-SCDMA/WCD
MA/EGSM/Wimax/TD-LTE/AMPS/S
MR 5G and other communication
systems

Order Examples:



Basic Specifications:

Impedance	50 Ω
Size(mm)	41.0*49.0*20.0mm
Operating Temp	-30~+70 $^{\circ}$ C/-40~+85 $^{\circ}$ C
Storage temperature	-50~+90 $^{\circ}$ C



Specifications:

Model No. (X=1: →Clockwise) (X=2: ←Anticlockwise)	Freq. Range MHz	IL. dB (max)	Isolation dB (min)	VSWR	Forward Power CW	Reverse Power W	Remark
WG4149A-X/300-475MHz	300-475	0.80	18.0	1.35	100	20	+25±5℃
		1.00	16.0	1.40			0~+60℃
		1.20	14.0	1.60			-40~+85℃
WG4149A-X/400-600MHz	400-600	0.60	20.0	1.25	100	20	+25±5℃
		0.70	18.0	1.30			-10~+60℃
WG4149A-X/600-1000MHz	600-1000	1.00	16.0	1.40	100	20	-10~+60℃

ADDED:

- 1. This model isolator could be made into a coaxial isolator with both SMA-male or SMA-female connector, which could be used in combination with customer requirements;**
- 2. The reverse power max is 20W;**
- 3. The table only shows some commonly used frequencies, which can be produced according to customer requirements;**
- 4. If you cannot find what you are looking for, please contact us!**